

ZRICKS

LEGACY  
**CELINO**

[www.Zricks.com](http://www.Zricks.com)



## BELONG...



While most people are awed by the majesty of palaces, a select few feel at home in them. Could it be because the regal upsweep of the architecture forms a perfect frame for their lifestyles? Is it the legendary craftsmanship that evokes a sense of familiarity? Or perhaps it is the rare luxuries that reflect the fine things they're used to? It could be all these things that inspire a sense of homecoming at Legacy Celino. Come home to Legacy Celino. Come home to where you belong.

# COME HOME TO...

## REGAL LUXURY

Premium Italian marble flooring greets you in every room, complemented by handpicked fittings and accessories from across the world. These include imported sanitary fittings and flawless glass partitions for the shower. Inverter ACs, 100% power back-up and an ozone-filtered swimming pool extend the sense of luxury.

## THE PRINCE OF LOCATIONS

Compromise has no place when it comes to Celino. And that includes its location.

- Just 2 Kms off Airport Road/NH7
- 2 Kms from Manyata Tech Park/Hebbal ORR
- 10 Kms from Windsor Manor Hotel
- 25 Kms from the International Airport
- 3 Kms from Columbia Asia Hospital

## THE MAJESTY OF SPACE

Each one of the 24 apartments sprawls across 2250 - 3720 sq. ft. The design of the apartments allows an abundance of natural light and ventilation, to facilitate optimal comfort and energy conservation.

SHOPPING, SCHOOLS AND HEALTHCARE AT YOUR BECK AND CALL. CELINO COMMANDS THE PRIDE OF PLACE, WHEN IT COMES TO CONVENIENCE.

Only 4 Kms from the proposed Mantri commercial enclave and RMZ mall.

A short drive from Esteem Mall and Sahakamagar and Yelahanka shopping districts.

Proximal to excellent schools such as VidyaShilp Academy, Delhi Public School, Mallya Aditi, Ryan International, Canadian International, TRIO World School and Legacy School Bangalore.

## UNCOMPROMISING SECURITY

Celino is intensively equipped with an array of security features, right from the main gate, to your very own front door.

Some of the features include:

- Electric perimeter fencing
- Video intercom to screen visitors
- Round the clock CCTV surveillance
- i-Button door locking systems

## THE ADVANTAGES OF VAASTU

Longstanding principles of Vaastu Shastra, which ensure that living environments are in harmony with the physical and metaphysical forces by optimizing the flow of energy, have been strictly followed while designing Celino.

## A RARE PERK CALLED GREENERY

45% of the estate has been dedicated to nature, with fine landscaping, tranquil water bodies, and exotic flora against a palette of cooling greens.

ZRICKS.COM



## FEATURES & AMENITIES

### SWIMMING POOL

Clear blue waters free of harsh chlorine await you, thanks to a high-end ozone filtration plant.

### GYMNASIUM

State-of-the-art equipment transforms dreams of fitness into reality.

### PARTY HALL

Designed to house unforgettable good times, the spacious party hall befits formal as well as casual occasions.

### CHILDREN'S PLAY AREA

Child-safe play equipment gladdens the hearts of children as well as parents.

### STEAM, SAUNA & JACUZZI

Special rewards for the body, mind and soul.

### COMMON AREAS

#### FLOORING

Italian marble lines the hallways and lobby areas.

#### STAIRCASE

Granite steps with child-safe railings.

#### ELEVATORS

Plush interiors and power back-up ensure 24/7 functionality and luxury.

### COVERED CAR PARK

Located in the basement, this not only protects your cars from the elements, but also offers provisions for car wash, electric point for vacuum cleaning and battery-operated car charging.

### INFRASTRUCTURE

#### STRUCTURE

RCC framed structure.

#### WALLS

Concrete block masonry.

#### PAINT

Plastic emulsion for walls and ceiling.

#### FLOORING

Exquisite handpicked Italian marble.

#### MAIN DOORS

Seasoned teak wood frame with polished teak wood shutter and architraves.

#### INTERNAL DOORS

Solid wooden frame with teak-veneered shutters.

## FEATURES & AMENITIES

### EXTERNAL DOORS & WINDOWS

Sliding aluminium/UPVC to match the elevation, with mosquito mesh shutter.

### BATHROOMS

#### AESTHETIC WASHROOMS

Elegantly designed with Italian marble and imported fittings.

#### EXHAUST FAN

Superior quality fans ensure proper circulation of air.

#### SHOWER ENCLOSURE

High quality glass partitions keep the bathroom clean and dry.

#### GEYSER

Heavy duty 30 ltr geysers meet all your hot water needs.

#### FLOORING

Italian marble with anti-skid tile flooring in the shower area.

#### VANITY COUNTER

Italian marble counter in all bathrooms.

### KITCHENS & UTILITY

#### GRANITE WORKING PLATFORM

With 2' protective tiling above the counter

#### SINKS

Single bowl in kitchen and double bowl sink in utility.

### CENTRALISED GAS CONNECTION

Piped gas ensures your kitchen is up and running 24X7.

### WATER TREATMENT PLANT

Pure soft water is provided at all points.

### PROVISION FOR MODULAR KITCHEN

Convenient provisions for an electric chimney, hob and water purifier.

### SECURITY SYSTEMS

#### VIDEO INTERCOM

Enables the screening of visitors from the reception to your apartment.

#### CCTV SURVEILLANCE

24X7 watch across the estate for added security.

#### ELECTRIC PERIMETER FENCING

To keep you safe from unwanted visitors.

#### i-BUTTON DOOR LOCKS

High security locks with 3 easy access modes of flash key, numerical keypad or conventional key.

ZRICKS



#### UTILITIES

##### UTILITY ROOM

With washing machine and dishwasher points, to keep domestic chores out of sight.

##### SERVANT'S ROOM

With its own separate washroom.

##### DRIVER'S ROOM

Located in the basement for the drivers to reside on occasional nights.

##### STAFF BATHROOMS

In the basement for building maintenance personnel, gardeners and security guards.

## LOCATION MAP



- 2 Kms from Airport Road/NH7

- 2 Kms from Manyata Tech Park/Hebbal ORR

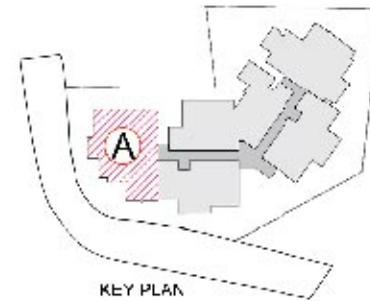




## MASTER PLAN

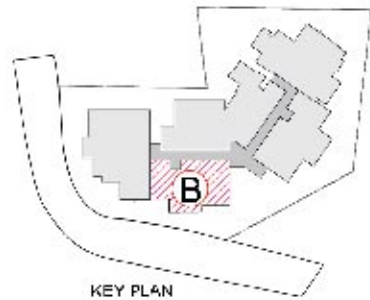
N G +4  
 ↑ 24 Apartments

ZRICKS.COM



## UNIT A

N 4 BHK  
 ↑ 3295 sq. ft.



KEY PLAN

## UNIT B

N 3 BHK  
 ↑ 2250 sq. ft.



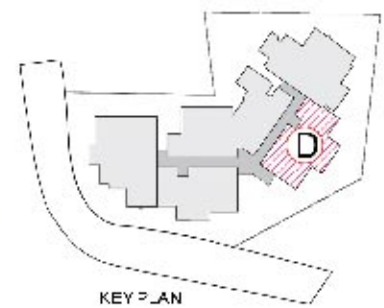
KEY PLAN



## UNIT C

N 4 BHK  
 ↑ 3670 sq. ft.





## UNIT D

**N** 3 BHK  
**↖** 2345 sq. ft.



## UNIT E

**N** 4 BHK  
**↗** 2890 sq. ft.

ZRICKS.COM

# A REPUTATION FOR INNOVATION, QUALITY AND TRUST

Legacy was established by experts in the construction business, with a vision to create world-class living environments and provide a better quality of life for the people who inhabit them.

Perfectionists by nature, we at Legacy believe in quality living. Our buildings are testaments to meeting your needs, fulfilling your requirements and offering you the best in construction. We aim to do this with all our projects and that too, always with a sense of flair, style and unforgettable luxury. The high standards for which we are known are constantly upgraded by our high-calibre team, making every

living environment a source of pride and joy for the owner.

Our beautifully crafted doors are always open in welcome, if you would like to explore our world: visit our projects, meet our people, or discover how we work.

REACH US AT:

+91 80 4050 4200

+91 98865 43330

[www.legacygroup.in](http://www.legacygroup.in)

ZRICKS.COM

## OUR OTHER PROJECTS...



LEGACY CASERO  
3300 - 6000 sq.ft ultra luxury apartments  
Jakkur Plantation



LEGACY DIMORA  
2750 sq.ft ultra luxury apartments  
Jakkur Plantation



LEGACY ARISTON  
1180 - 2360 sq.ft exquisite apartments  
Yelahanka



LEGACY SCHOOL  
ICSE & IGCSE Syllabus  
Hennur Road, next to BioZEEN



LEGACY CALDERA  
3300 sq.ft limited edition homes  
Cunningham Cross Road



LEGACY ESTILO  
2190 - 2850 sq.ft luxurious apartments  
Yelahanka



**LEGACY**

Appreciate Life

333, Thimmaiah Road, Bangalore 560 052. Phone: +91.80.4050.4200, +91.98865.43330 | [www.legacygroup.in](http://www.legacygroup.in)



This brochure is conceptual in nature and is by no means a legal offering. The promoters reserve the right to change, remove or add any specifications or plans mentioned herein.

[www.Zricks.com](http://www.Zricks.com)